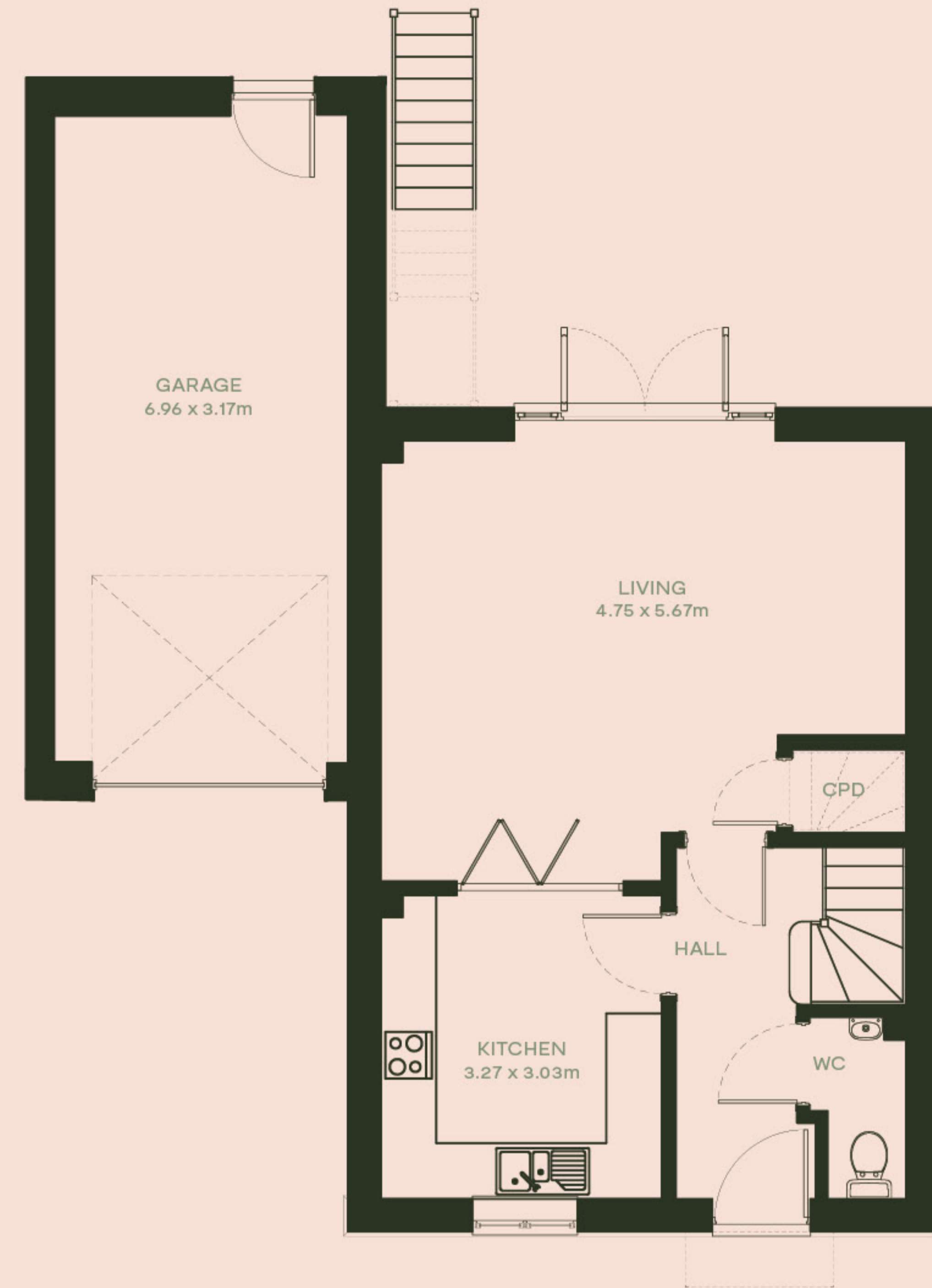


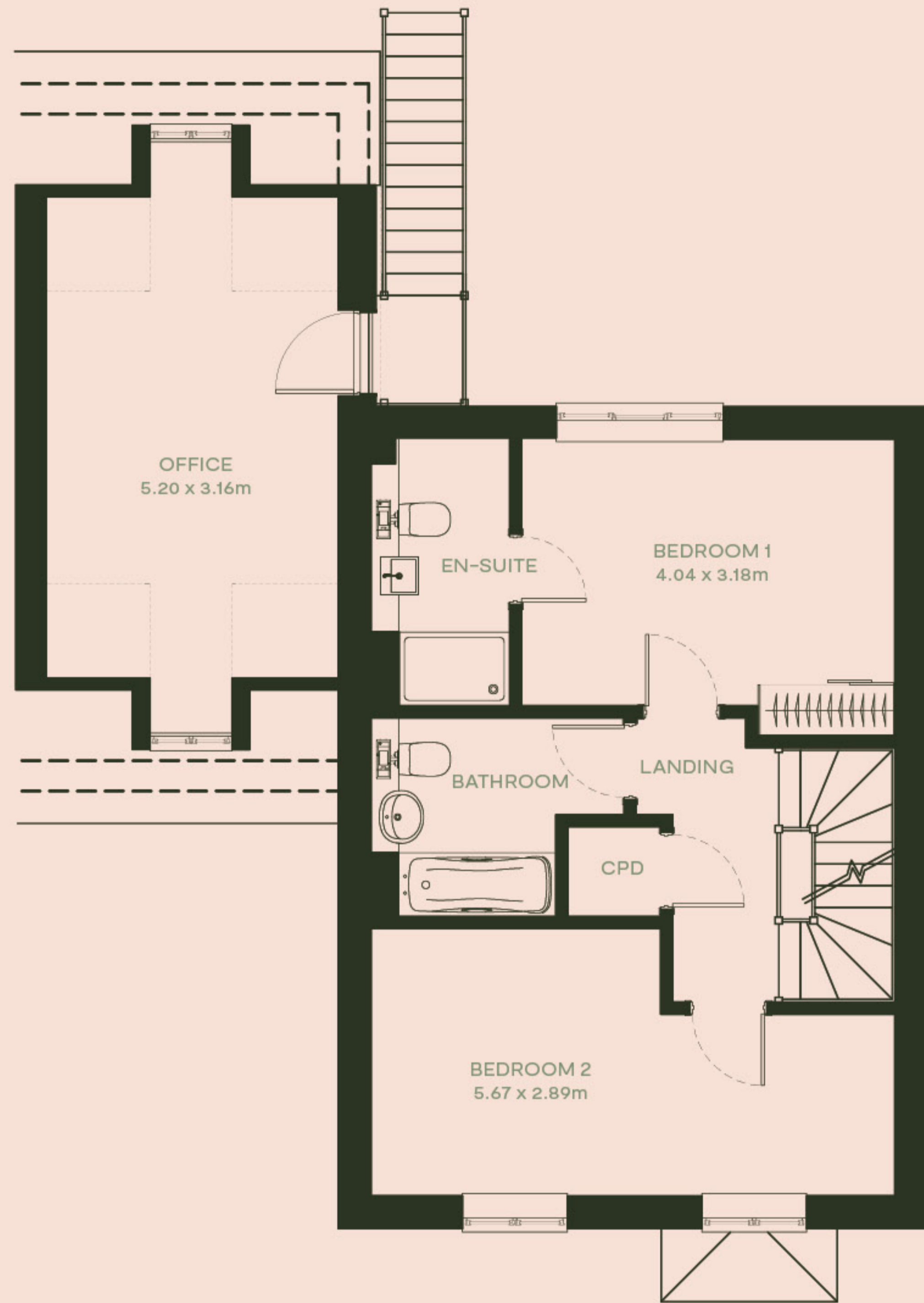
# No 5 & No 6

NESTLED TOGETHER AS SEMI-DETACHED, BOTH 5 & 6 BOAST 3 BEDROOMS, 3 BATHROOMS, AND A GENEROUS PRIVATE GARDEN WITHIN GRAYLING PARK

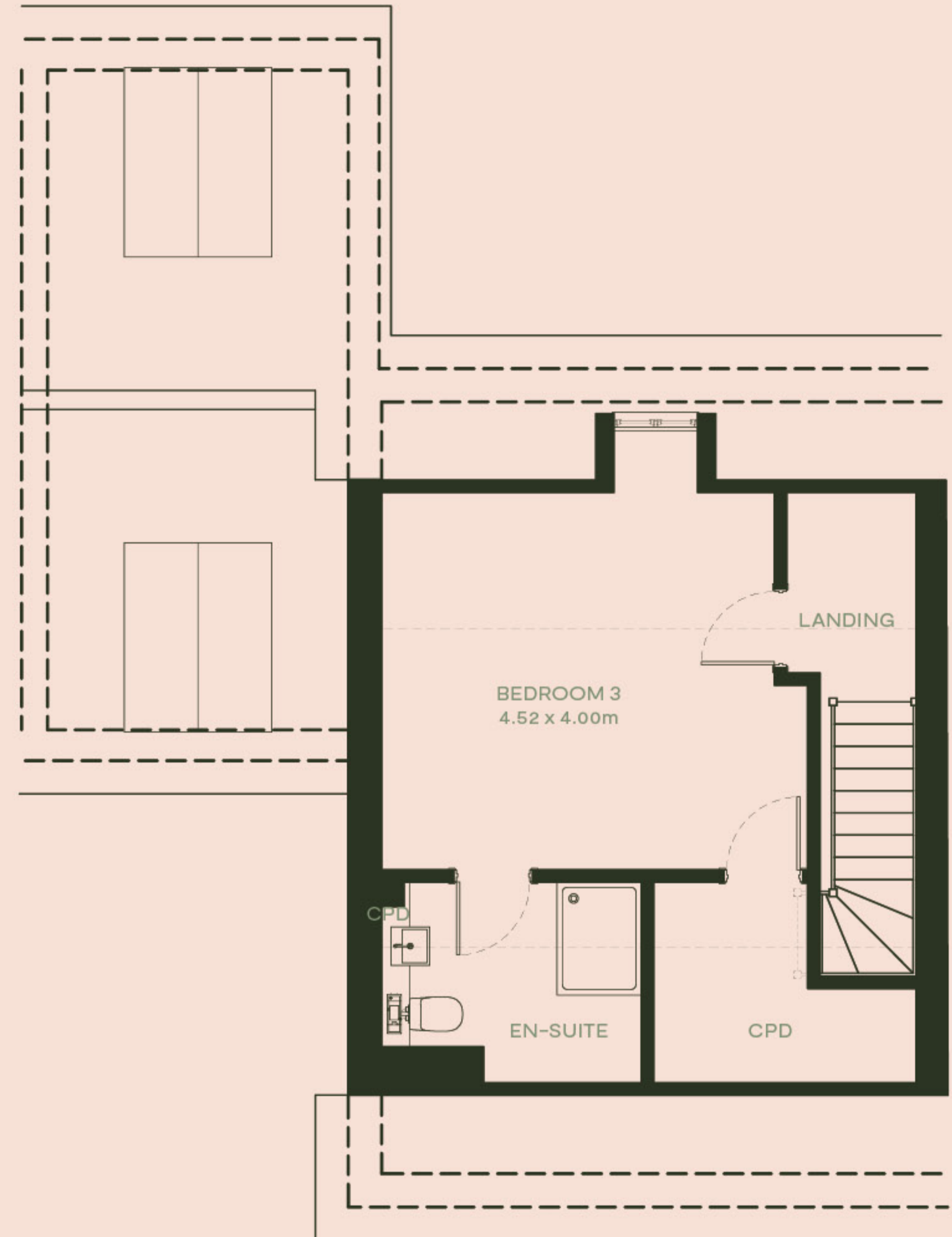
3 BEDROOMS — 3 BATHROOMS



Ground Floor



**First Floor**



**Second Floor**